



Cleaved-Factor X/ Factor X LC (A41) Polyclonal Antibody

Catalog No	YP-Ab-03349
Isotype	IgG
Reactivity	Human;Rat;Mouse;
Applications	WB;ELISA
Gene Name	F10
Protein Name	Coagulation factor X
Immunogen	The antiserum was produced against synthesized peptide derived from human FA10. AA range:22-71
Specificity	Cleaved-Factor X/ Factor X LC (A41) Polyclonal Antibody detects endogenous levels of fragment of activated Factor X/ Factor X LC protein resulting from cleavage adjacent to A41.
Formulation	Liquid in PBS containing 50% glycerol, 0.5% BSA and 0.02% sodium azide.
Source	Polyclonal, Rabbit,IgG
Purification	The antibody was affinity-purified from rabbit antiserum by affinity-chromatography using epitope-specific immunogen.
Dilution	Western Blot: 1/500 - 1/2000. ELISA: 1/20000. Not yet tested in other applications.
Concentration	1 mg/ml
Purity	≥90%
Storage Stability	-20°C/1 year
Synonyms	F10; Coagulation factor X; Stuart factor; Stuart-Prower factor
Observed Band	50kD
Cell Pathway	Secreted.
Tissue Specificity	Plasma; synthesized in the liver.
Function	catalytic activity:Selective cleavage of Arg- -Thr and then Arg- -Ile bonds in prothrombin to form thrombin.,function:Factor Xa is a vitamin K-dependent glycoprotein that converts prothrombin to thrombin in the presence of factor Va, calcium and phospholipid during blood clotting.,online information:Factor X entry,PTM:N- and O-glycosylated.,PTM:The activation peptide is cleaved by factor IXa (in the intrinsic pathway), or by factor VIIa (in the extrinsic pathway).,PTM:The iron and 2-oxoglutarate dependent 3-hydroxylation of aspartate and asparagine is (R) stereospecific within EGF domains.,PTM:The vitamin K-dependent, enzymatic carboxylation of some glutamate residues allows the modified protein to bind calcium.,similarity:Belongs to the peptidase S1 family.,similarity:Contains 1 Gla (gamma-carboxy-glutamate) domain.,similarity:Contains 1 peptidase S1 domain.,similarity:Contains 2 EGF-li



Background

This gene encodes the vitamin K-dependent coagulation factor X of the blood coagulation cascade. This factor undergoes multiple processing steps before its preproprotein is converted to a mature two-chain form by the excision of the tripeptide RKR. Two chains of the factor are held together by 1 or more disulfide bonds; the light chain contains 2 EGF-like domains, while the heavy chain contains the catalytic domain which is structurally homologous to those of the other hemostatic serine proteases. The mature factor is activated by the cleavage of the activation peptide by factor IXa (in the intrinsic pathway), or by factor VIIa (in the extrinsic pathway). The activated factor then converts prothrombin to thrombin in the presence of factor Va, Ca²⁺, and phospholipid during blood clotting. Mutations of this gene result in factor X deficiency, a hemorrhagic condition of variable severity. Alternative sp

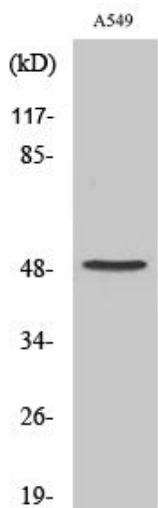
matters needing attention

Avoid repeated freezing and thawing!

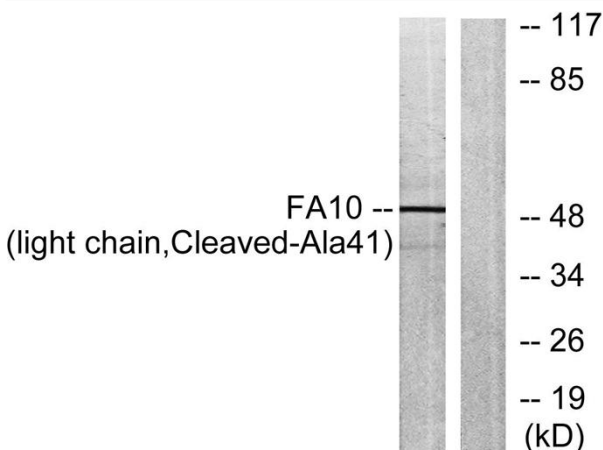
Usage suggestions

This product can be used in immunological reaction related experiments. For more information, please consult technical personnel.

Products Images



Western Blot analysis of various cells using Cleaved-Factor X/ Factor X LC (A41) Polyclonal Antibody



Western blot analysis of lysates from A549 cells, treated with etoposide 24uM 24h, using FA10 (light chain, Cleaved-Ala41) Antibody. The lane on the right is blocked with the synthesized peptide.